



ESG-Logger-AN

Installation Guide

Object This document aims to present the “spec type” part of the embeded FW of “product name” device.
WARNING: Document writing in progress. >

Application version [xxxx]
CloverCore version [xxxx]



0. Summary

0. Summary	2
1. Physical setup	4
1.1. Attaching the base plate	4
1.1.1. Tools	4
1.1.2. Wall plate	5
1.2. Attaching the ESG-Logger-AN	6
1.2.1. Orientation	6
1.2.2. Mounting the device onto the wall plate	6
2. Connect sensors	7
3. Device activation	8
4. Checking correct operation	10
4.1. Basics – with Magnet	10
4.1.1. Check if the device is in Operation	10
4.1.2. Trigger sensor reading and data sending	11
4.2. Expert use – with INS-Player app	12
4.2.1. Starting the INS-Bluread	12
4.2.2. Connecting the smartphone to the INS-Bluread	12
4.2.3. Sending commands	13
5. Basic troubleshooting	14

Revisions

Version	Date	Contributeur(s)	Changements
00.01	2024-04-25	CSE	First Draft
00.02	2024-11-07	ESS	Revision 1 after Customer feedback
00.03	2024-12-04	ESS	Revision 2 after Customer feedback
00.04	2024-04-10	ESS	Add details about Analog input locations
00.05	2025-04-08	YED	Adjustment
01.05	2025-07-02	ESS	Modification to meet current Device version

Document approval

Version	Redaction	Review	Validation
NAME	ESS		
FUNCTION	Product Manager		
DATE	2025-07-02		
VISA			

Reference Documents

Ref.	Title
Template	TSxxxx_Project--SpecType_C3_02.01_EN.docx

1. Physical setup

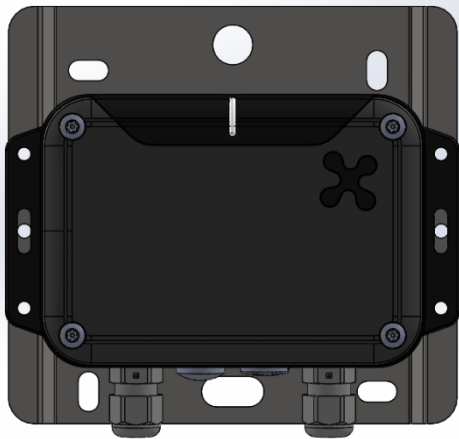
1.1. Attaching the base plate

1.1.1. Tools

You will need the following:

	
<p>A drill and bits matching the wall material and the screw girth</p>	<p>Up to 4 screws and their anchors (maximum girth 4mm)</p>
	
<p>A manual T15 screwdriver for mounting the device onto the wall plate (screws provided)</p>	<p>A level</p>
	
<p>A pen or pencil to mark the holes</p>	<p>Washers and a hammer depending on the type of screws and the wall</p>
	
<p>A magnet to arctivate the device</p>	

1.1.2. Wall plate

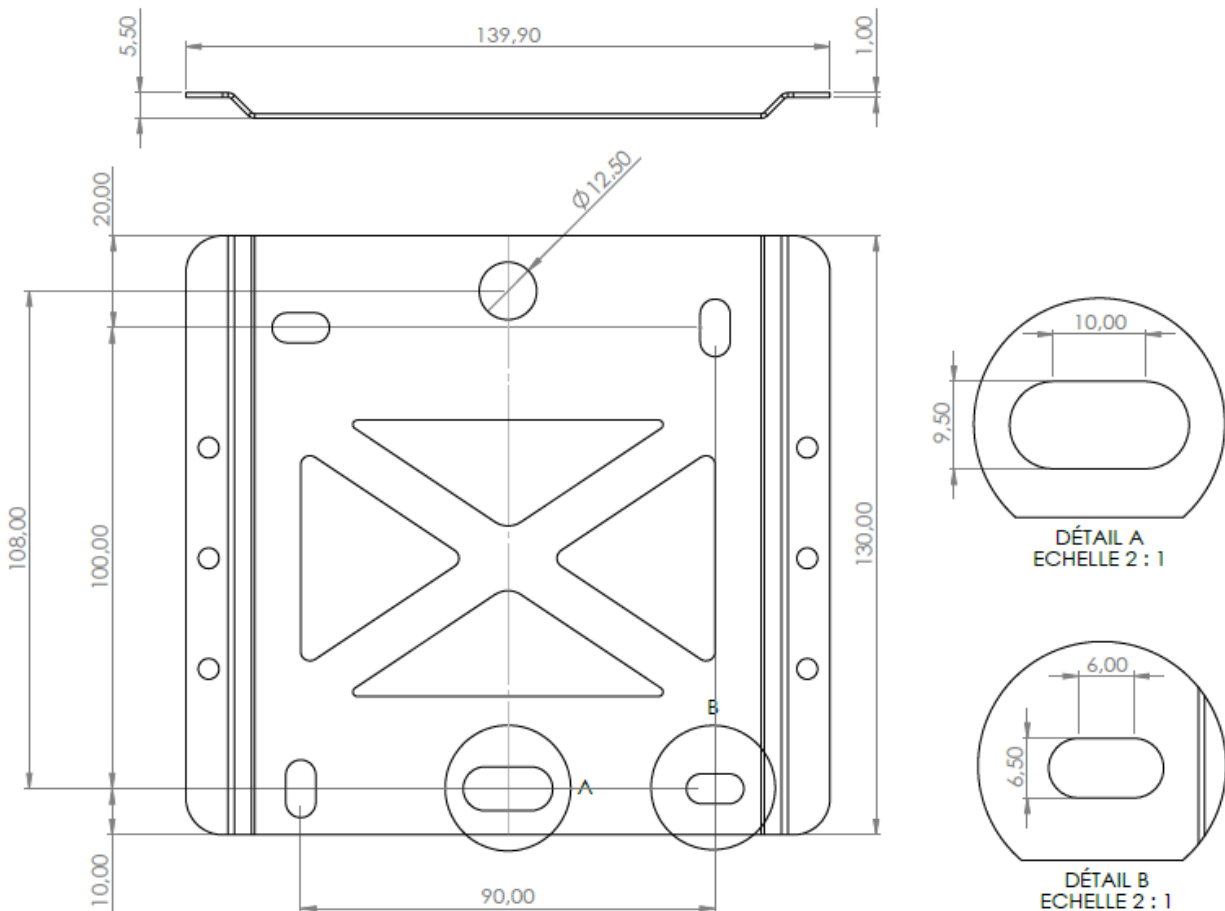


The base plate can be fixed with three screws if needed (on an irregular wall for example), using the top center round hole ideally and using the oblongs to reach even. We recommend four screws if the wall surface is reasonably flat.

The indented ears must be facing outwards.

Use the plate to mark the holes you will drill the wall. The plate should be horizontal before tightening the screws

Dimensions

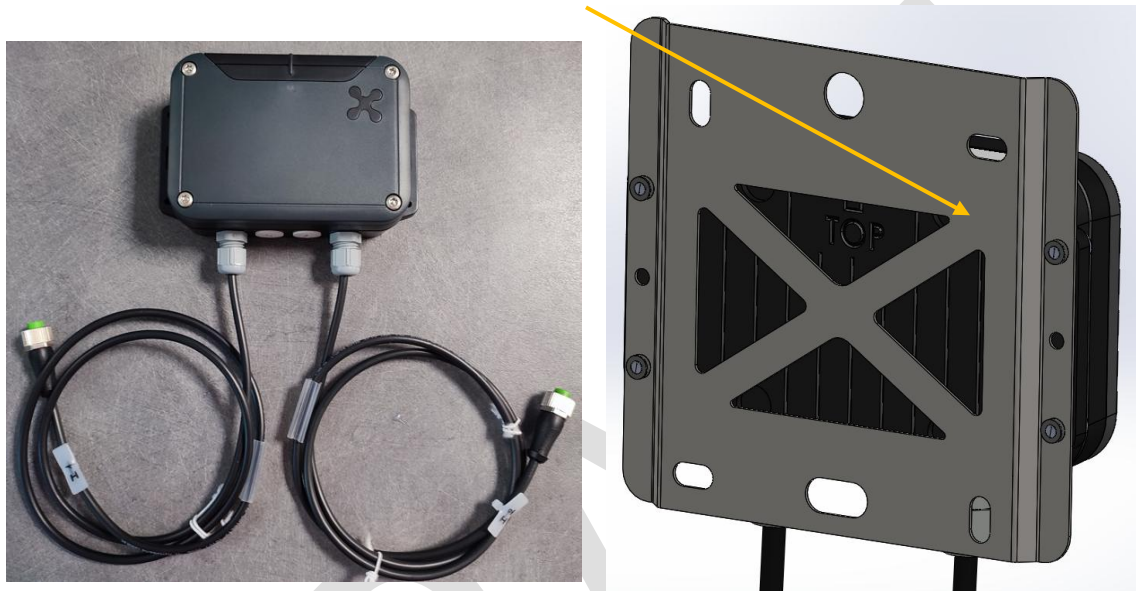


1.2. Attaching the ESG-Logger-AN

1.2.1. Orientation

The ESG-Logger-AN attaches horizontally on the intended ears, with the cables pointing DOWN and the LED indicator UP.

The markings at the back also clearly indicate TOP.

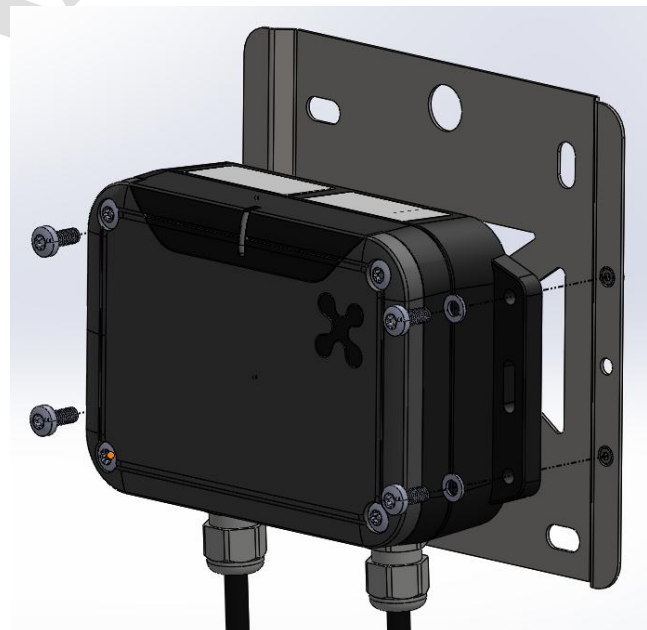


1.2.2. Mounting the device onto the wall plate

The wall plate embeds crimped nuts. Use the provided screws and washers to mount the device as described by figure opposite.

T15 screw driver is required.

Recommended torque: 1N.m .

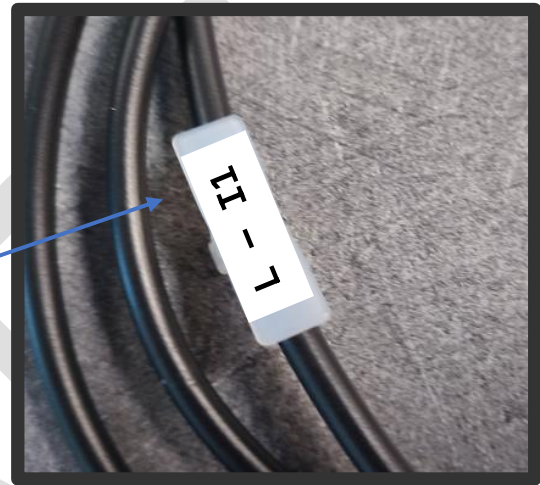


2. Connect sensors

The ESG-Logger-AN will come fitted with the right cables and connectors. Replacing the type of sensor cables or the cables themselves in case of damage is not ATEX compliant. In case the cables were damaged or do not match your setup requirements, please contact the manufacturer.

All operations described here can be done without PPE (Personal Protection Equipment).

2 cables for 2 inputs



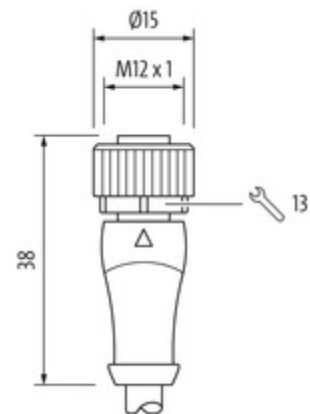
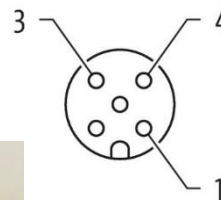
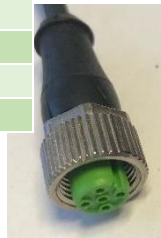
The inputs are marked onto plastic labels wrapper on the cables.

Standard device assembly involve L - I1 (AN1) at the left side and R - I2 (AN2) at the right side.

Analogic connectors are screw-on caps. These caps will simply be applied on the sensor and screwed on gently, by hand, ensuring that the thread is exactly aligned in the teat and the cap.

Anything requiring excessive force is probably done wrong.

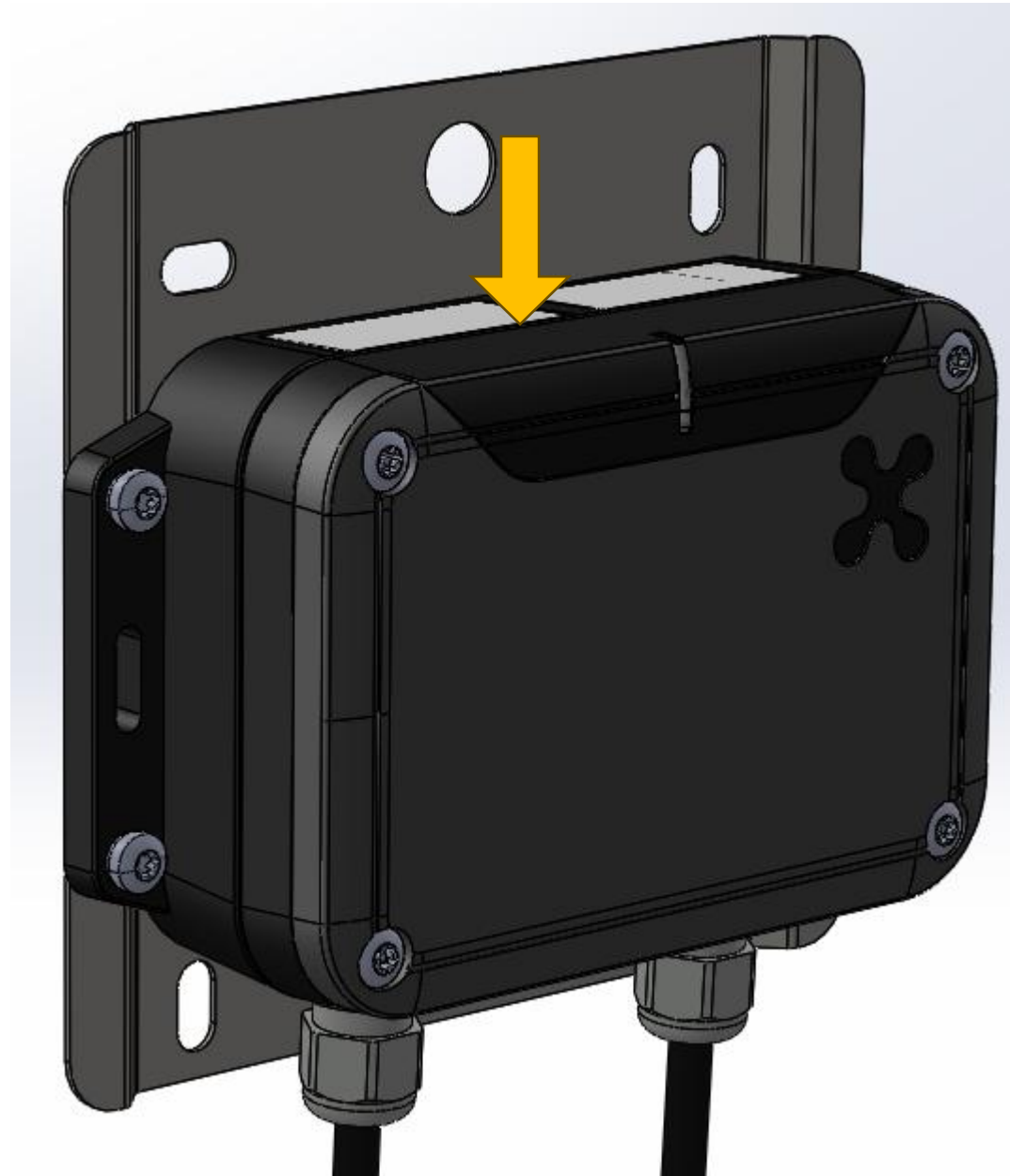
Pin	Description
1	Power supply output +5Vdc (only during sensor measurement)
2	Not used
3	GND
4	Ratio signal
5	Not used



3. Device activation

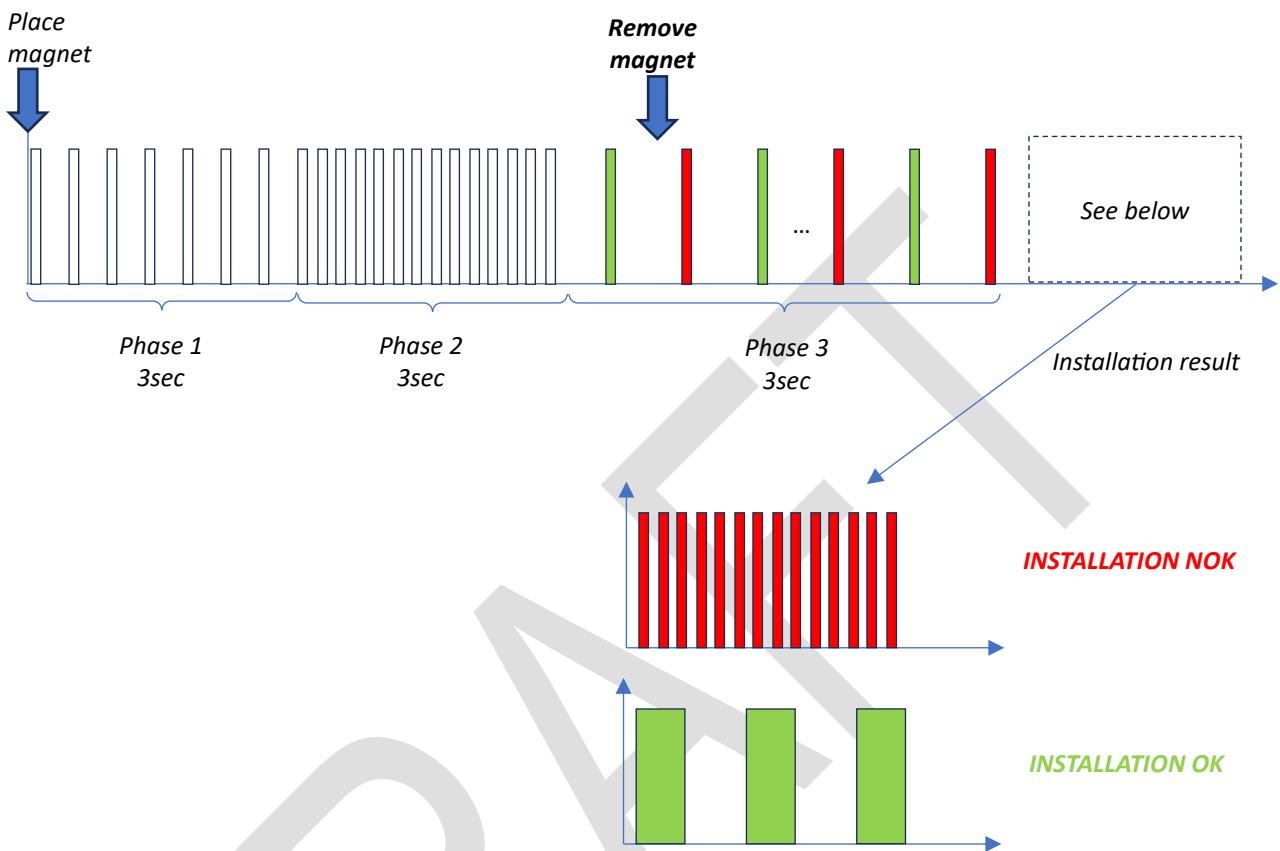
You will need a magnet to perform this phase. While all metallic magnets should work, very weak magnets (such as plastic plate magnets) may prove insufficient.

Initialization is done by placing the magnet on the top side of the ESG-Logger-AN, about 0.5cm to the left of the LED, as shown here with the yellow arrow.



The LED indicator will flash green, then flash green first fast, then slow, then stable green.

The LED indicator will not be flashing anymore during the life of the product.



In case of success, your ESG-Logger-AN is ready to use!

4. Checking correct operation

4.1. Basics – with Magnet

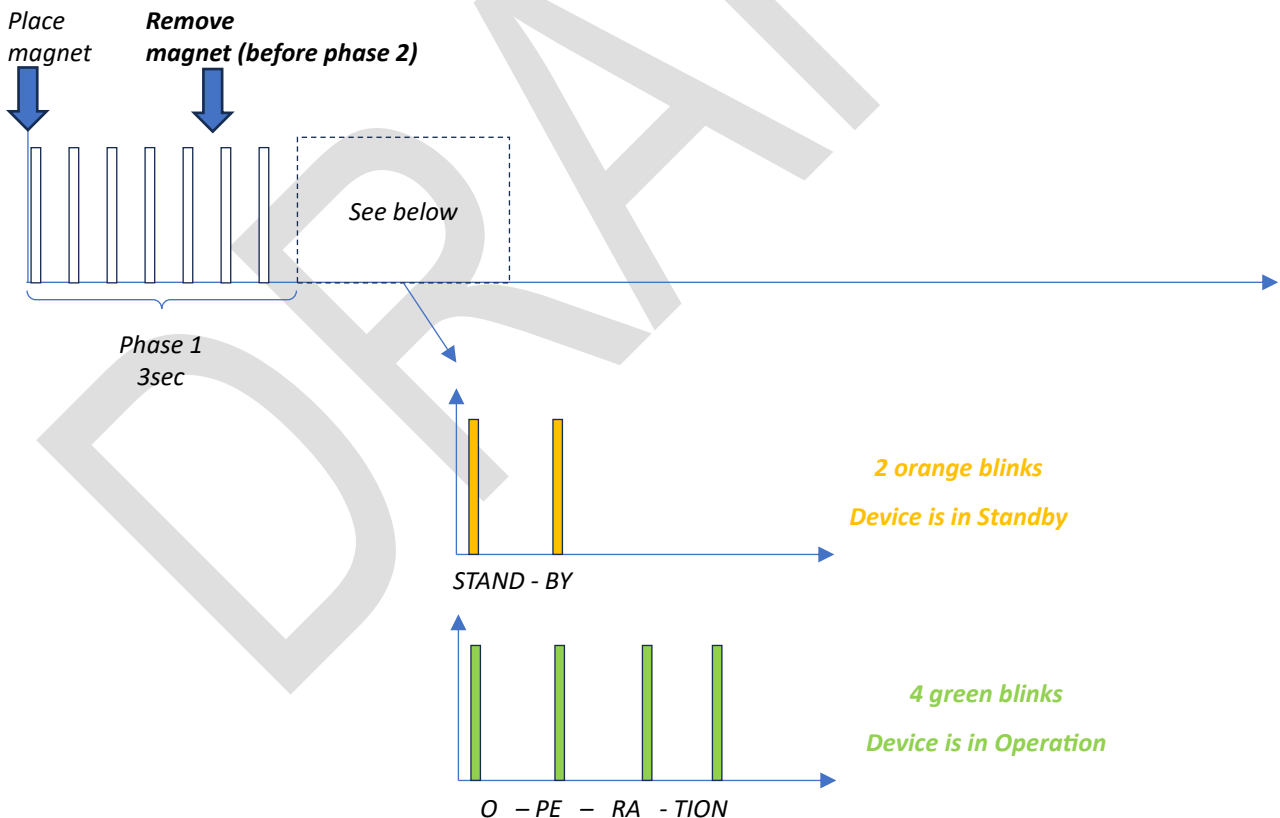
When the ESG-Logger-AN has been initialized in the previous step, its first activity was to send an event through the network (Sigfox or LoRaWAN).

Contact someone who can tell you if this has been received properly.

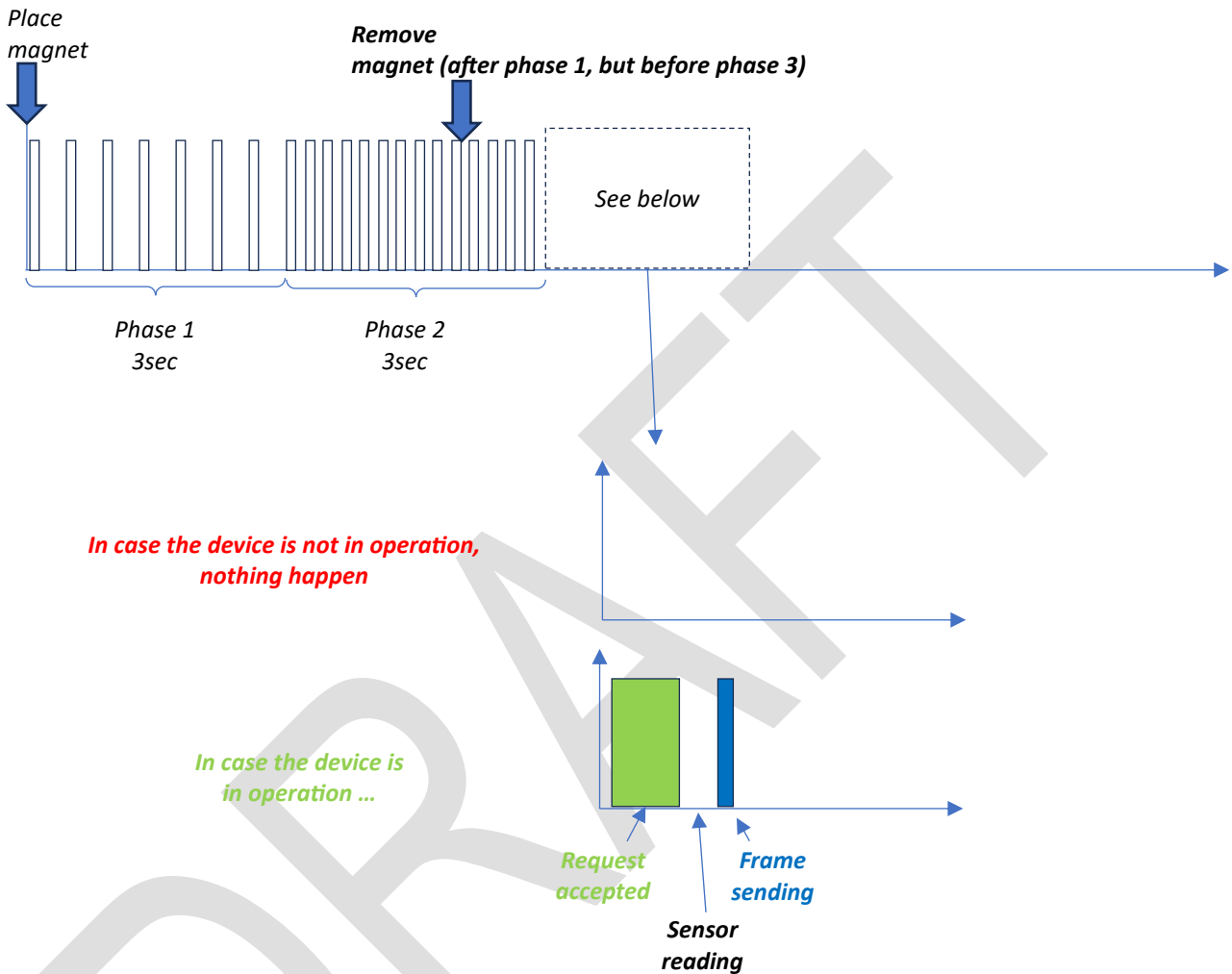
We also can request for an immediate sensors reading and data sending by magnet by using the following sequence:

4.1.1. Check if the device is in Operation

Presenting the magnet and releasing it during phase 1 involves that the device indicates its operation status by LED blink as described below.



4.1.2. Trigger sensor reading and data sending



4.2. Expert use – with INS-Player app

INS-Player is an Android application which connects to the INS-Blueread through Bluetooth. The INS-Blueread then connects to the ESG-Logger-AN (and other Ineo-Sense devices) with Clover-Net, the native language of the device.

This section covers content from ESG-Logger-AN INS-Player Profile v1.0 EN.pdf

4.2.1. Starting the INS-Blueread

Press the central button on the INS-Blueread until the blue LED flashes.

4.2.2. Connecting the smartphone to the INS-Blueread

4.2.2.1. Installing INS-Player

On the first use, you will need to install the INS-Player application.

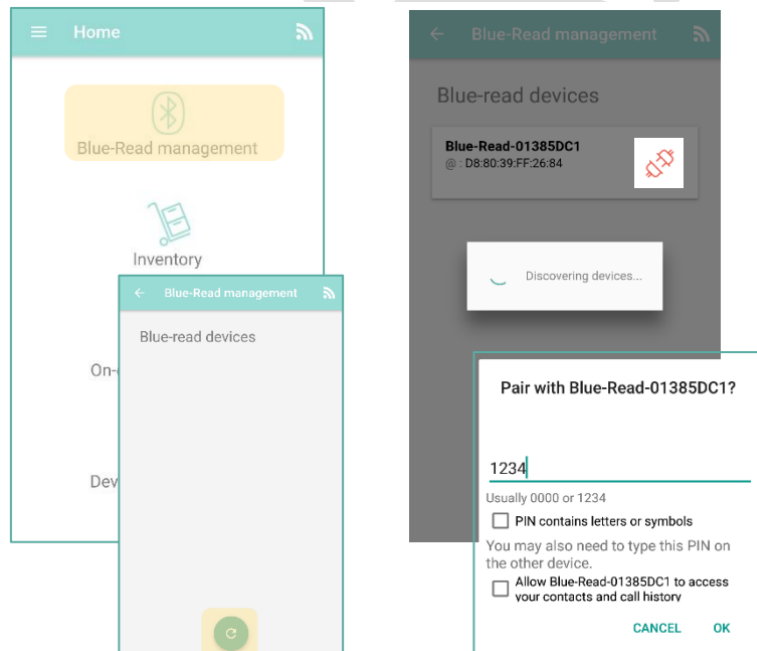
INS-Player Android app link : www.ineo-sense.com/downloads/INS-Player_v1.apk

You will need to allow installation of apps from unknown sources in your mobile security settings.

4.2.2.2. Launch

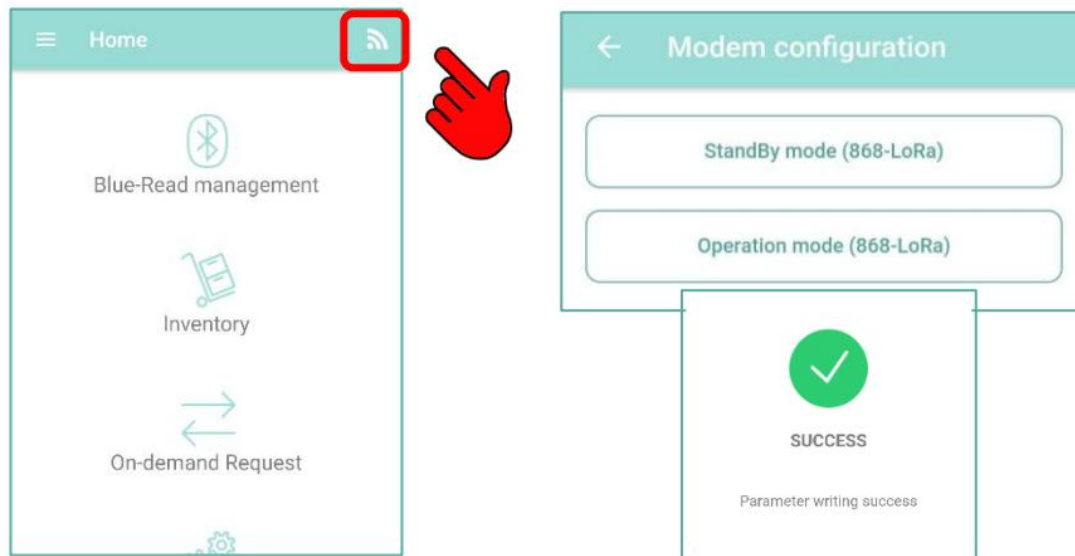
Launch the application 'INS-Player' on your smartphone, and pair your INS-BlueRead with your mobile and the app:

1. 1. Refresh devices list to find your INS-Blueread
2. 2. Click on the connect button of the desired device
3. 3. When asked, enter the Bluetooth pairing code : 1234



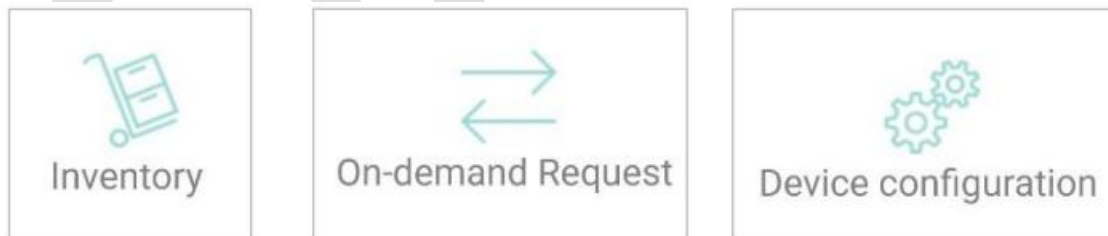
4.2.2.3. Choose profile and setup INS-Bluread

1. Once connected to the INS-Bluread, you can choose the profile that matches the device you want to set up. You can choose a basic profile, with the usual features and commands, or an expert profile, to go deeper in the device setup.
2. Right after choosing the profile of your device, you need to set up the INS-BlueRead into the right communication mode.



4.2.3. Sending commands

You will then be able to go through the list of your devices, request their states/ settings and modify them.



With the ESG-Logger-AN, typically you will find buttons to read the value returned by sensors, modify or see thresholds, read history or even visualize historical data, depending on what buttons were configured to do.

5. Basic troubleshooting

What you see	What to check
I can't connect with the INS-Player or INS-Blueread	Check that the INS-Blueread does light up (if not, the battery is probably exhausted), and synchronize the INS-player application
I don't see any values in the application	Check the operations mode
I don't have any events	Check the physical connector
Nothing at all	Bring a magnet next to the LED. If there is no LED activity at all, the battery may have failed.