



## USER Guide

---

<b>Object</b>	<i>This document briefly presents the functions and uses of the INS-BLUEREAD android mobile application.</i>
---------------	--

---

# Sommaire

<b>1. Download and Installation .....</b>	<b>4</b>
1.1. Safety lift.....	4
1.2. APK Download Link .....	4
1.3. Installation.....	4
<b>2. Search for INS-BLUEREAD &amp; Login .....</b>	<b>5</b>
<b>3. Add Devices (Button : To Scan Page) .....</b>	<b>6</b>
<b>4. Actions (Button : To Action Page).....</b>	<b>7</b>

## Revisions

Version	Date	Contributeur(s)	Changements
01.00	2025-06-26	MSA	First Release

## Document approval

Version	Redaction	Review	Validation
NAME	MSA		
FUNCTION	Application Developer		
DATE	2025-06-26		
VISA			

## Reference Documents

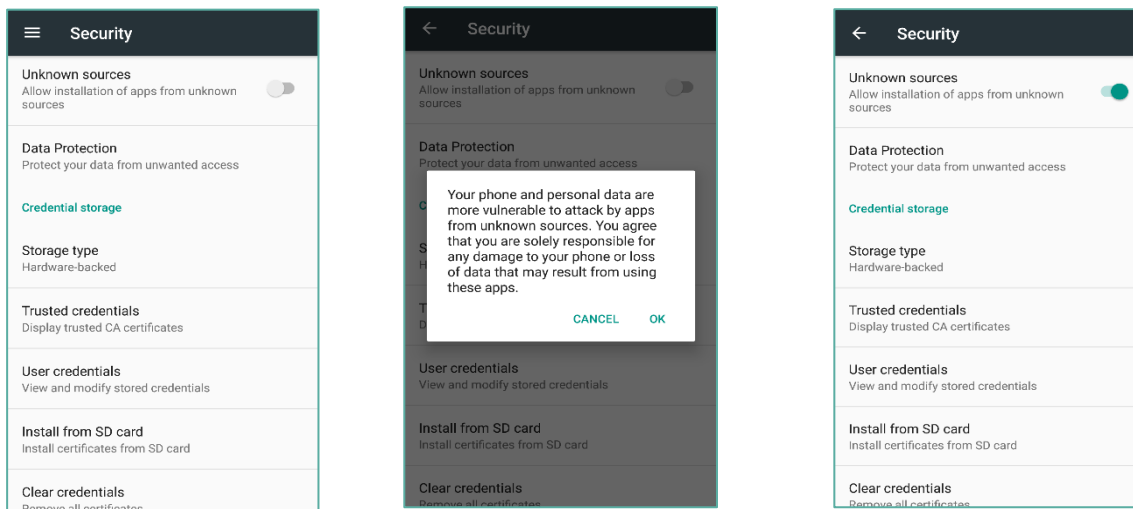
Ref.	Title	Designation

Source : SUPP\_UG00011\_INS-BLUEREAD\_TOOLS\_C3\_01.00\_EN\_2506.docx

# 1. Download and Installation

Authorise the installation of applications from unknown sources in your mobile's security settings.

## 1.1. Safety lift



## 1.2. APK Download Link

Download from target Android smartphone:

[https://ineo-sense.com/downloads/INS-BlueRead-Tools\\_v1](https://ineo-sense.com/downloads/INS-BlueRead-Tools_v1)


## 1.3. Installation

Find the APK file on your SmartPhone, open it and follow the instructions.


An icon will be created on the home screens once the installation is complete.

## 2. Search for INS-BLUEREAD & Login

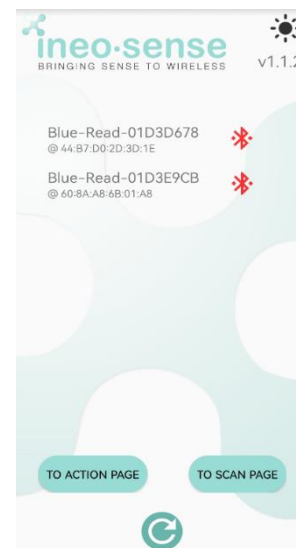
**IMPORTANT** *Bluetooth and localisation must be activated and you must have accepted the authorisations requested when you first launched the device.*

Devices already associated with the smartphone will appear when the application is launched. New Bluereads can be discovered by updating the list of devices to find an INS-Blueread.: 

You can now connect to the Blueread

1. Click on the connect button  of the desired device, which will turn green if successful.

2. When prompted, enter the Bluetooth pairing code: 1234 (1st connection only)



### 3. Add Devices (Button : To Scan Page)

There are two ways to add a new item:

1. Add manually: enter the serial number (SN) then press add manually.
2. Scan the QR Code on the product label.

---

**NOTE** You can zoom in and out and switch on the smartphone's flash.

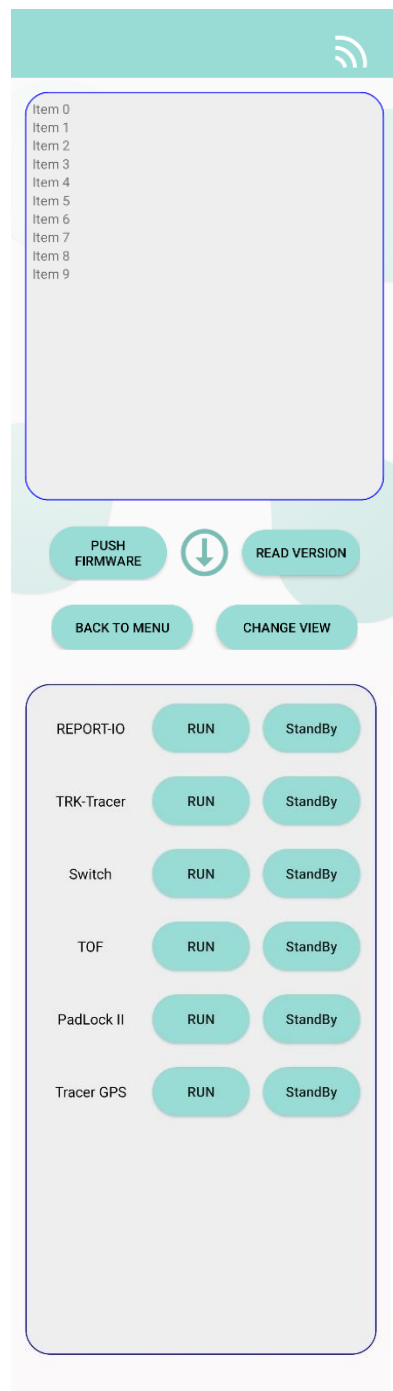
**WARNING** The QR Code must be in the yellow zone

---



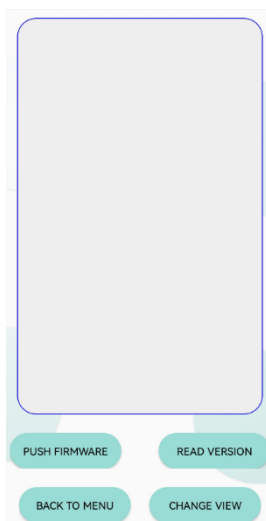
## 4. Actions (Button : To Action Page)

**IMPORTANT** It is preferable that the phone does not go into standby mode during the Firmware push in order to get the final response.

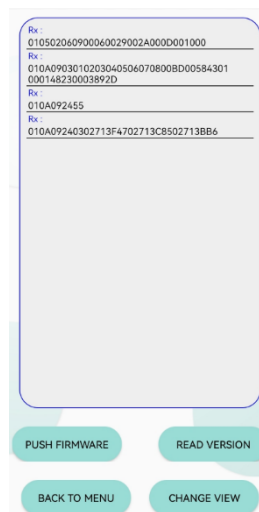


The user can modify the blueRead's communication information by accessing the configuration page by clicking on the button in the top right-hand corner.

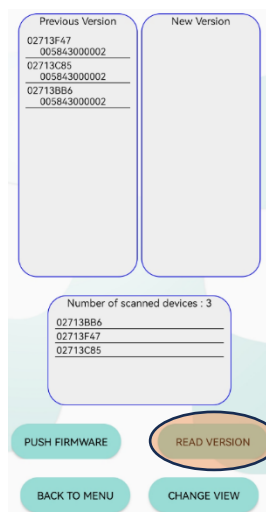
For each type of device, 2 options are available: Run and StandBy. Simply click on the associated button to configure the blueRead.



Here you will see the responses to the various commands sent, such as configuring the Bluread, retrieving the transaction ID, sending the pending firmware and the response at the end of the process. To send these commands, simply press the Push Firmware button.

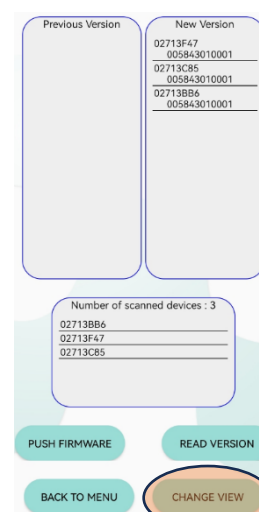


1. Bluread configuration successfully completed
  2. Transaction ID recovered
  3. Firmware push begins
  4. Firmware push ends successfully: all 3 devices:
- 02713F47
  - 02713C85
  - 02713BB6
- have been updated



You can read the version of the devices before and/or after the Firmware push by pressing the button: Read Version

Here the products are in a version prior to 43010001



Here the products have been updated to version 43010001

Help: You can switch between the 2 screens using the button: Change View